



Explore Your Options

# AUCTION

LEADING THE INDUSTRY SINCE 1945

**Auction #2: Wednesday – May 16, 2018 – 6:00 PM**

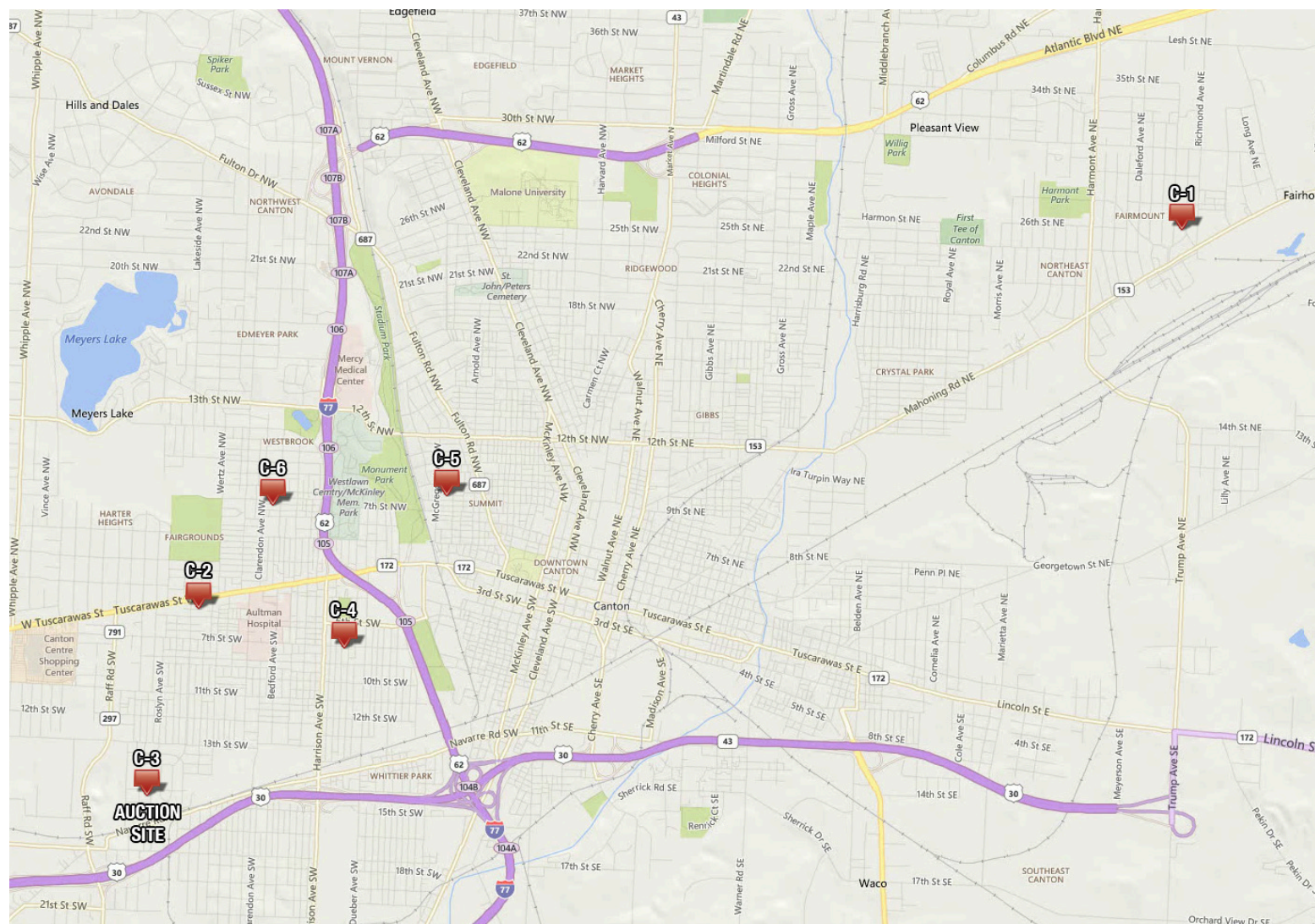
## Attention Investors! - Receivership Auction

17 PROPERTIES IN 2 DAYS!

6 INCOME PROPERTIES – CANTON, OH

All sells on location:

**1417 Roslyn Ave. SW, Canton, OH 44710**



Information is believed to be accurate but not guaranteed.



**330.455.9357 • kikoauctions.com**



Explore Your Options

# AUCTION

LEADING THE INDUSTRY SINCE 1945

**Auction #1: Tuesday – May 15, 2018 – 6:00 PM**

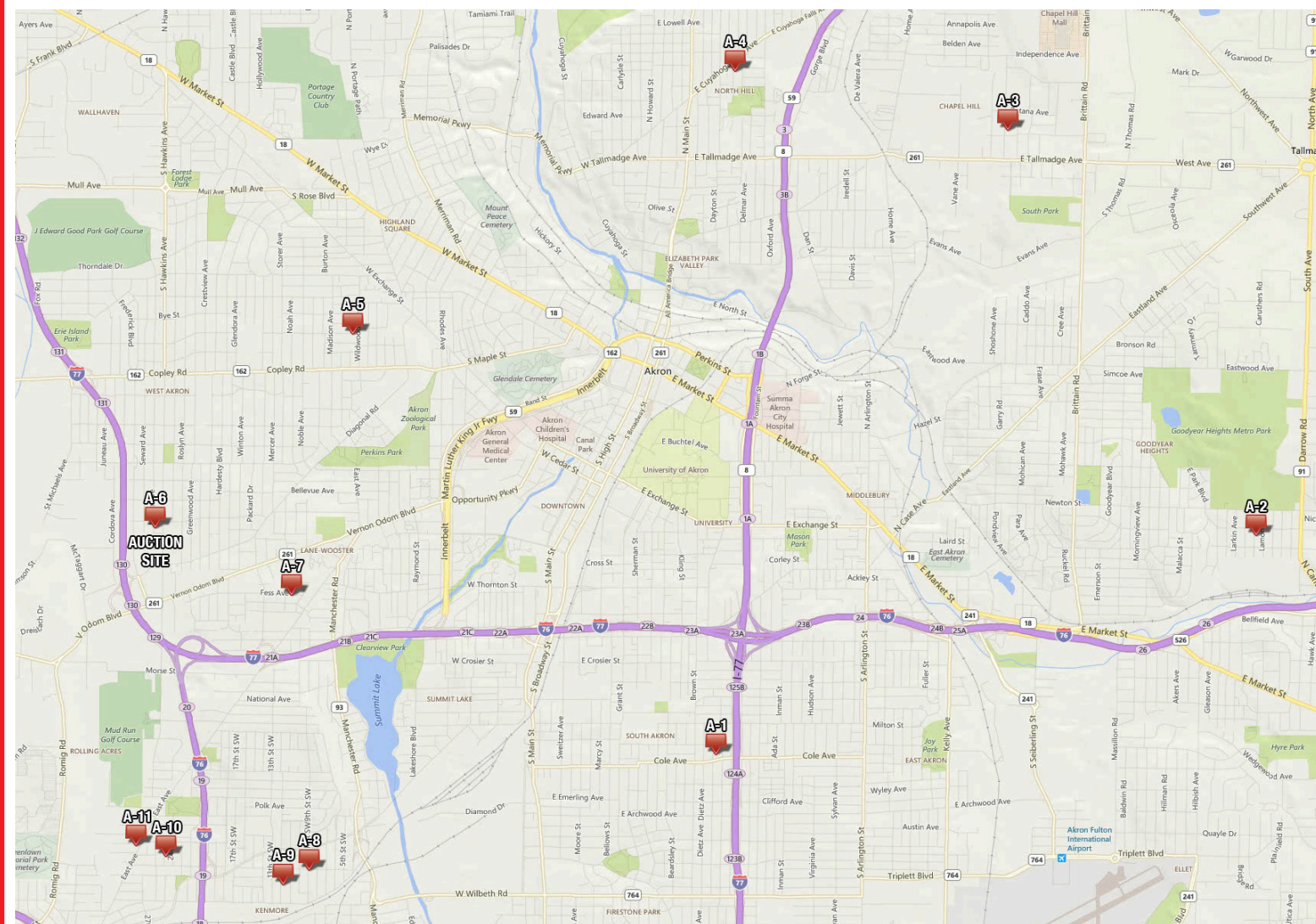
## Attention Investors! - Receivership Auction

17 PROPERTIES IN 2 DAYS!

11 INCOME PROPERTIES – AKRON, OH

All sells on location:

**1411 Nome Ave., Akron, OH 44320**



Information is believed to be accurate but not guaranteed.



**330.455.9357 • kikoauctions.com**



# Auction #1: Tuesday – May 15, 2018 – 6:00 PM

## 11 INCOME PROPERTIES – AKRON, OH

All sells on location:

1411 Nome Ave., Akron, OH 44320



A-1



A-2



A-3



A-4



A-5



A-6

Auction Location



A-7



A-8



A-9



A-10



A-11

- A-1:** 1093 Herberich Ave., Akron, OH 44301. Parcel #6706816
- A-2:** 445 Tompkins Ave., Akron, OH 44305. Parcel #6715409
- A-3:** 1487 Breiding Rd., Akron, OH 44310. Parcel #6825466
- A-4:** 877 Keeney St., Akron, OH 44310. Parcel #6813158 & #6813159
- A-5:** 882 Peckhem St., Akron, OH 44320. Parcel #6835490
- A-6:** 1411 Nome Ave., Akron, OH 44320. Parcel #6710319
- A-7:** 806 Fess Ave., Akron, OH 44307. Parcel #6712898
- A-8:** 724 Florida Ave., Akron, OH 44314. Parcel #6726942
- A-9:** 2311 12th St. SW, Akron, OH 44314. Parcel #6814656
- A-10:** 2229 25th St. SW, Akron, OH 44314. Parcel #6812430
- A-11:** 2208 East Ave., Akron, OH 44310. Parcel #6823550

**NOTE:** All properties from A-1 through A-11 will be sold from 1411 Nome Ave., Akron, OH 44320 at 6:00 PM. Homes A-1 through A-5 will be open for viewing from 3:00-4:00 PM auction day. Homes A-6 through A-11 will be open for viewing from 4:30-5:30 PM.

**TERMS ON REAL ESTATE:** 15% down auction day, balance due at closing. Any desired inspections must be made prior to bidding. All information contained herein was derived from sources believed to be correct. Information is believed to be accurate but not guaranteed.

**AUCTION BY ORDER OF:** Receiver for Maximize Properties LLC, Summit County Case # CV-2015-12-5640



Auctioneer/Realtor®  
**JOSEPH F. GORDON**  
 330-805-7627  
 joegordon@kikocompany.com

# Auction #2: Wednesday – May 16, 2018 – 6:00 PM

## 6 INCOME PROPERTIES – CANTON, OH

All sells on location:

1417 Roslyn Ave. SW, Canton, OH 44710



C-1



C-2



C-3

Auction Location



C-4



C-5



C-6

- C-1:** 2555 Kirby Ave. NE, Canton, OH 44705. Parcel #202721
- C-2:** 3044 Grove Pl. SW, Canton, OH 44710. Parcel #00220072
- C-3:** 1417 Roslyn Ave. SW, Canton, OH 44710. Parcel #205475
- C-4:** 707 Park Ave. SW, Canton, OH 44706. Parcel #00226441
- C-5:** 1311 8th St. NW, Canton, OH 44703. Parcel #219409
- C-6:** 2515 6th St. NW, Canton, OH 44708. Parcel #236921

**NOTE:** All properties from C-1 through C-6 will be sold from 1417 Roslyn Ave. SW, Canton, OH 44710 at 6:00 PM. Homes C-1 through C-6 will be open for viewing from 4:00-5:00 PM auction day.

**TERMS ON REAL ESTATE:** 15% down auction day, balance due at closing. Any desired inspections must be made prior to bidding. All information contained herein was derived from sources believed to be correct. Information is believed to be accurate but not guaranteed.

**AUCTION BY ORDER OF:** Receiver for Maximize Properties LLC, Summit County Case # CV-2015-12-5640



Auctioneer/Realtor®  
**JOSEPH F. GORDON**  
 330-805-7627  
 joegordon@kikocompany.com